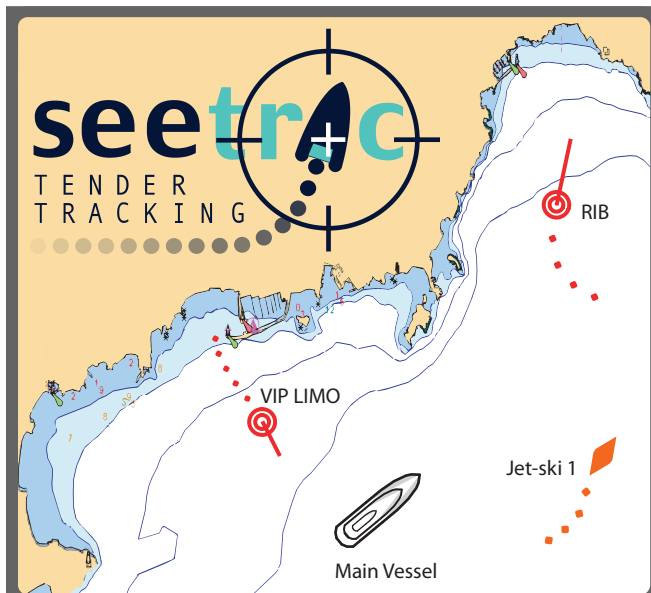
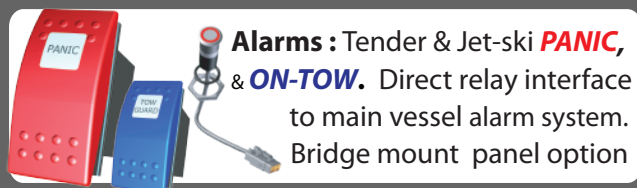


FRONT



Seetrac is a Ship Security system, tracking Tenders & Jet-skis. Supports Tender Depth, **PANIC** Button & **ON-TOW** alarms. Smart Base Unit with digital processing, provides flexible Chart integration



Alarms : Tender & Jet-ski **PANIC**, & **ON-TOW**. Direct relay interface to main vessel alarm system. Bridge mount panel option



Tender Depth : Transmit readings from the Depth Sounder on the Tender, direct to the chart system on the main vessel. "Scout" ahead into poorly charted anchorages & reefs



Tender Display : "Local" Position, Depth; "Remote" Position & Alarms from other Tenders and jet-skis Main Vessel position on Tender



Jet-trak : a jet-ski used irresponsibly is dangerous Call or Disable a jet-ski, remotely. Increasing confidence and safety. ECDIS & Handset operation

www.seetrac.com

Seetrac TTS-Tender Tracking System

REAR



Tender & Jet-ski Unit
Power Management & hardware diagnostics

Latest Generation Seetrac Base Unit (SBU) integrates directly to most charting systems



Globe-trak unit

- Fully Integrated Digital Transponder System
- Interfaces with most major Electronic Chart Systems :
 - Transas NS 3000 / 4000
 - Raytheon Pathfinder ECDIS
 - Kongsberg K-Bridge ECDIS
 - Nobeltec Admiral MAX Pro
 - Navmaster Professional/Superyacht
 - ARPA/AIS-for systems without a Seetrac interface others coming soon-please visit the website for latest information
- Range 5 NM+ using standard antennas
- "Globe-trak" Tender Satellite plug-in optional
- License Free Transmission platform (EU/FCC)
- "Jet-trak" compatible transponders allowing Remote Ignition Control (RIC) of Jet-skis
- Specialist applications on request

Dealer contact details :

www.seetrac.com